

## Split Core Current Transformer KCT-6

The KCT-6 Series are split-core current transformers. The CT can be mounted to existing panels, such as control centers or load centers, to measure or monitor wattage. These CTs can be mounted without removing existing cables for easier installation



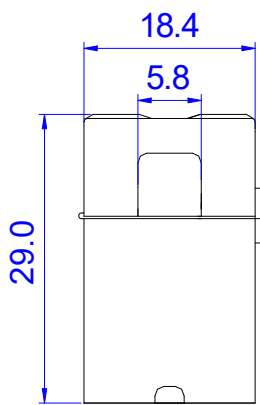
### Electrical Specifications

Rated Primary Current(Amp.) 50/60Hz	20A
Turnn ratio	Np:Ns=1:2000
Current Ratio	20A/10mA
D.C.Resistance at 20 °C	200 Ω MAX
Accuracy @RL≤10Ω	1%
Phase Error at Rated Current	≤2°
Operating Temperature Range	-40~65°C
Storage Temperature Range	-45~85°C
Dielectric Withstanding Voltage(Hi-pot)	2.5KV/1mA/1min
Insulation Resistance	DC500V/100MΩ min

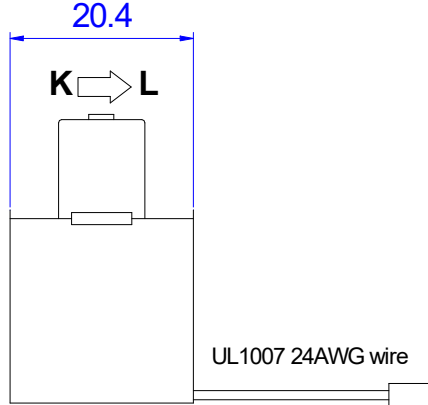
### Mechanical Specifications

CUP	PBT
Opening Dimensions	180 degree
Output type	UL1007 24AWG PVC WIRE+ XHP-2
Approx.Weight	15g

**Mechanical Dimensions in mm**



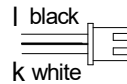
Front View



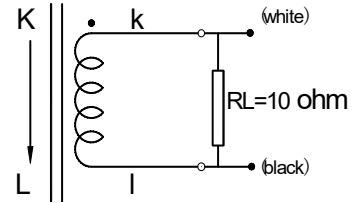
Left View

UL1007 24AWG wire

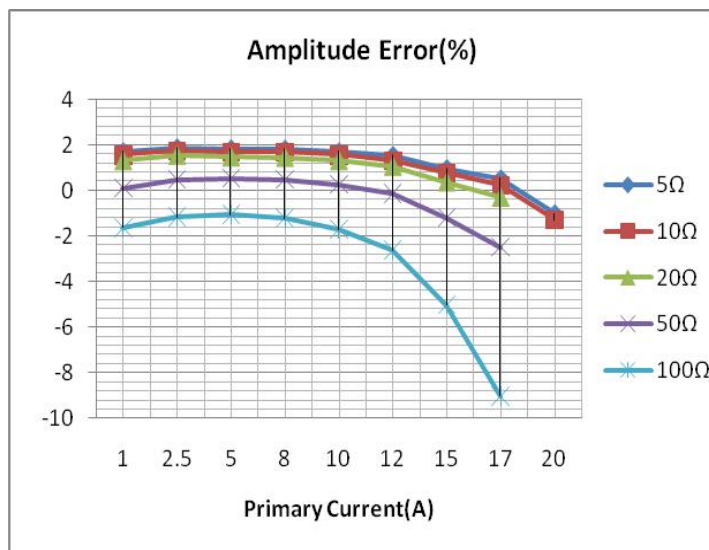
CONNECTOR  
TYPE:XHP-2



**Test Circuit:**



**Output curve: (RL=10Ω)**



**Applications:**

- Current Measurement
- Monitoring & Protection

**Advantage:**

- Low cost
- Mount easy

- Excellent linearity over the whole range
- Fully RoHS Compliant.

**Material List:**

NO	ITEM	DESCRIPTION	UL Card	MATERIAL	NOTE
1	CORE	UU20.6	/	N07	
2	CASE	PA66	E135714	PA	
3	BOBBIN	PBT3883	E107536	PBT	
4	WIRE	2UEW MW75	E164502	UEW/U	
5	LEAD WIRE	UL1007 24AWG	E189674	PVC	
6	SOLDER	99.3%	/	Sn	

**CUSTOMER APPROVED**

Approved by	Checked by	Acknowledged by

CUSTOMER P/ N( VER): \_\_\_\_\_